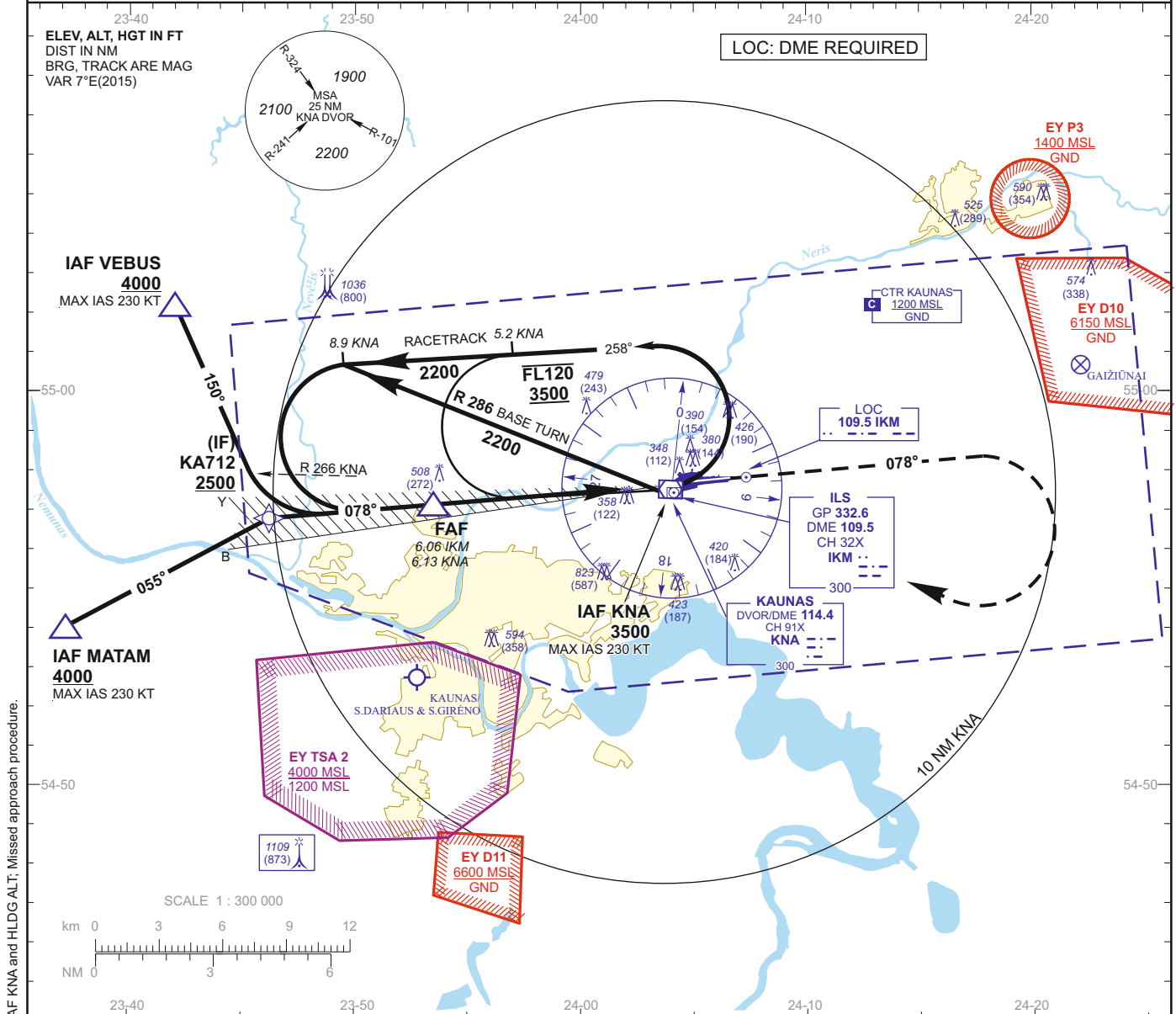
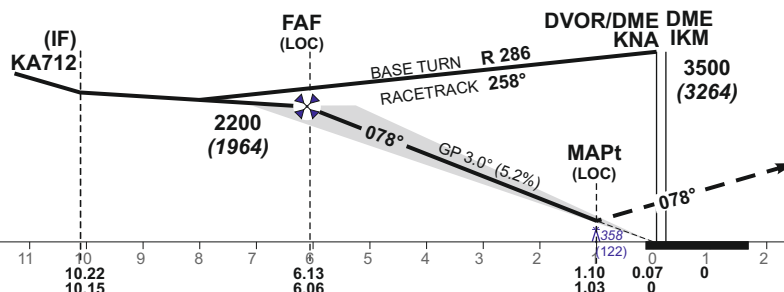


INSTRUMENT APPROACH
CHART - ICAO**AERODROME ELEV 256**
HEIGHTS RELATED TO
THR RWY 08 - ELEV 236TWR 124.200
118.500
ATIS 129.050**KAUNAS**
ILS or LOC RWY 08

TRANSITION ALT 5000

MISSED APPROACH PROCEDURE

Climb on track 078° to 2200,
then turn right to KNA, climbing to 3500.

OCA(OCH)		A	B	C	D	DIST DME IKM			5	4	3	2		
STRAIGHT-IN APPROACH	ILS CAT I	440 (204)	450 (214)	460 (224)	470 (234)	Altitude			1870	1550	1240	920		
						Height			(1634)	(1314)	(1004)	(684)		
	LOC	610 (374)												
CIRCLING		see EYKA-AD-2.24-40 - 1				LOC : timing not authorized for defining the MAPt								
Remark: DME IKM coverage - at least coverage of azimuth angle guidance sector. Zero range is indicated at DTHR.						GS		Kts	80	100	120	140	160	180
						FAF-MAPt 5.0 NM		min:sec	3:45	3:00	2:30	2:09	1:53	1:40
						Rate of descent		ft/min	415	520	625	730	835	940
						For data tabulation see verso								

KAUNAS
RWY 08

AERONAUTICAL DATA TABULATION

ILS or LOC INSTRUMENT APPROACH from IAFs(KNA, MATAM, VEBUS)	
FIX/POINTS	COORDINATES
MATAM (IAF) - BRG 070.60° / 15.74 NM KNA	54 54 08.9N 023 37 22.7E
VEBUS (IAF) - BRG 103.90° / 13.40 NM KNA	55 02 19.2N 023 42 11.7E
KNA DVOR/DME (IAF)	54 57 37.4N 024 03 59.1E
KA712 (IF) - BRG 079.19° / 10.22 NM KNA ; BRG 078.28° / 10.15 NM IKM	54 56 53.3N 023 46 18.4E
FAF - BRG 079.70° / 6.13 NM KNA ; BRG 078.28° / 6.06 NM IKM	54 57 14.9N 023 53 22.5E
FAP - BRG 079.74° / 5.98 NM KNA ; BRG 078.28° / 5.91 NM IKM	54 57 15.4N 023 53 38.1E
MAPt - BRG 086.30° / 1.10 NM KNA ; BRG 078.28° / 1.03 NM IKM	54 57 41.1N 024 02 04.2E
THR RWY 08	54 57 45.60N 024 03 34.16E
DTHR RWY 08	54 57 46.43N 024 03 51.01E
LOC IKM	54 57 55.3N 024 06 49.1E
DME IKM	54 57 42.8N 024 0408.4E
Final approach (LOC) descent angle: 2.98°	